

www.dwl.us
760.753.7319

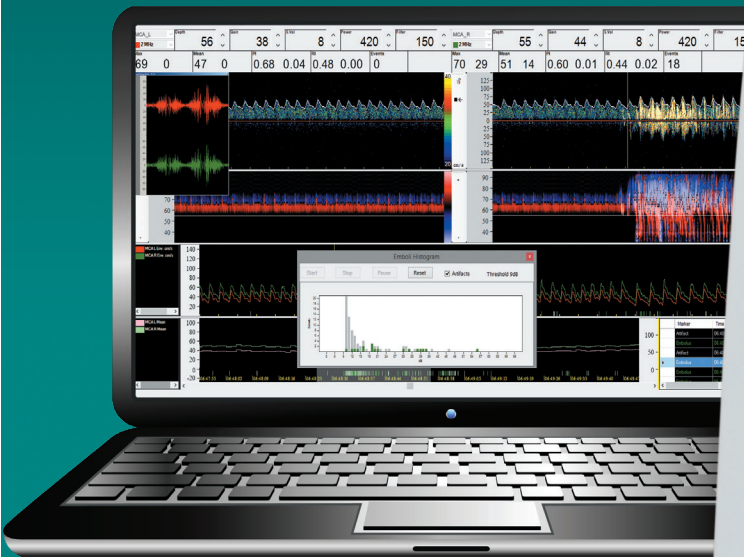
DWL
USA



Doppler-Box™ X

Top performance. Flexible. Modular.

- DWL® Doppler technology with superior signal and image quality
- Measurement of high flow velocities up to 1200 cm/s
- Multi-depth display with 9 Doppler spectra windows simultaneously
- Individual extensible by program options and upgrades
- For connecting to any external computer
- Optional external Color Doppler Imaging module
- DICOM and HL7
- Data exchange with Philips IntelliVue and ICM+
- Easy transport with mobile cart option
- Built-in-cart battery option

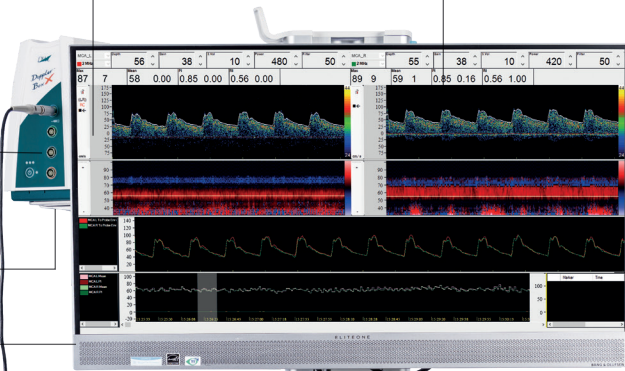


www.dwl.us



Very compact and modular DWL® TCD device for routine, monitoring, emboli detection, NMA®, CO₂/VMR, Evoke Flow diagnostics

Intuitive DWL® software for user defined configurations and settings



Probe connectors for 1/2/4/8/16 MHz

Rotatable device holder with quick release for use independently

Upgradable with external Color Doppler Imaging module

Optional rotatable All-in-One computer

DWL® probe holder



Optional built-in-ion battery (4-6 hours) and powervar system

Mobile cart option with storage draw and basket

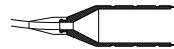
Doppler-Box™ X

Dimension L x W x H	8.6 x 14 x 11 inch
Weight	5.5 lbs
Doppler frequencies (MHz)	PW: 1 / 2 / 16 PW & CW: 4 / 8
Doppler channels	2
Spectra windows	1-9
Doppler-M-Mode	●
Gates	max. 8000
Audio playback	●
Continuous spectra recording	●
Display	Touchscreen 23"
Resolution	1920 x 1080 Full HD
USB remote control	optional
Hard disk	Depend on PC
USB ports	Depend on PC
Ethernet	10 / 100 / 1000 MBit
DVD-RW	Depend on PC
Graphic card interface	DP
DICOM interface	optional
Analog inputs / outputs	8 / 4
Digital interface ⁵	Philips IntelliBridge, ICM+
Operating system	Windows 10 Pro
Offline reader software	●
Remote support	●
DWL® database	●
Archiving internal	●
Archiving external	USB / NET
Data export	UTF-8 ASCII
Doppler raw data export	●
DICOM, HL7	optional
External Color Doppler Imaging module	optional

Mobile GCX cart option⁴

Dimension L x W x H	24" x 20" x 34" - 60"
Weight	85 - 124 lbs various
Computer	optional / All-in-One
Resolution	High resolution touchscreen
Power Supply	optional / Ametek Powervar
Printer	optional / HP Inkjet wireless printer
Battery	optional / lithium-ion

Handheld probes



Available in 1/2 MHz



4 MHz



8 MHz

Microprobes



16 MHz

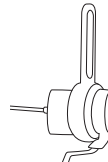


Probe navigator⁴

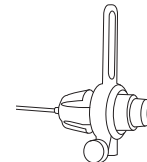
Probe fixations



Fixations
several models



Available with 1/2/4 MHz
monitoring probes



1/2 MHz
handheld probes

Software modules

- Routine
- + Upgrade Emboli Detection
- + Monitoring
- + Upgrade CO₂ / Vasomotor
- + NMA®
- + Upgrade Evoke-Flow

+ = optional

Basic configuration

Digital DWL® TCD device with DWL® routine software, remote control with mouse function, probe holder.

Additional accessories

Laptop⁴, mobile cart option incl. All-in-One computer⁴, built-in-cart battery option⁴, headphone⁴, foot switch, analog in- and output cable.

Classification

Transcranial Doppler Device: MDD Class II a

Device cart

Recommended accessory by DWL USA, Inc.



Authorized DWL® Distributor

DWL USA, Inc.
4062 Flying C Rd
Suite 37
Cameron Park
CA 95682
USA

Phone 760-753-7319
sales@dwl.us
www.dwl.us



Doppler-Box™ X

 made in Germany

CE 0123  FDA K051 085

Manufacturer: Compumedics Germany GmbH,
Josef-Schuetzler-Strasse 2, 78224 Singen / Germany, www.dwl.de
Compumedics Germany GmbH is certified in accordance with EN ISO 13485.
Multi-Dop, EZ-Dop, Doppler-Box, DiaMon, NMA, DWL and the DWL logo are
trademarks of Compumedics Germany GmbH, Compumedics

and the Compumedics logo are trademarks of Compumedics Limited
Australia. Windows is a trademark of Microsoft Corporation.
GTIN: Doppler-BoxX 04260493310055. Subject to change without notice.

⁴ Merchandise, ⁵ Only with monitoring software