

www.dwl.us  
760.753.7319

DWL  
USA

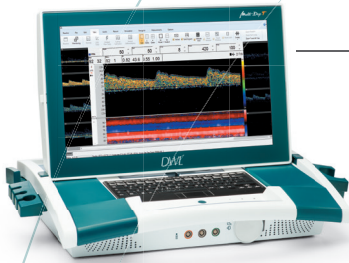


## Multi-Dop® T digital Dynamic and extremely versatile.

- DWL® Dopplertechnology with superior signal and image quality
- Measurement of high flow velocities up to 1200 cm/s
- Multi-depth display with 9 Doppler spectra windows simultaneously
- Integrated touchscreen with tablet function
- Optional external Color Doppler Imaging module
- Optional with integrated CO<sub>2</sub> module
- DICOM and HL7
- Easy transport with mobile cart option
- Built-in-cart battery option



www.dwl.us



Compact, portable and removable DWL® TCD device for routine, monitoring, NMA®, emboli detection, CO<sub>2</sub>/VMR, Evoke Flow

Intuitive DWL® software for user defined configurations and settings

Optional rotatable monitor 24" Full HD

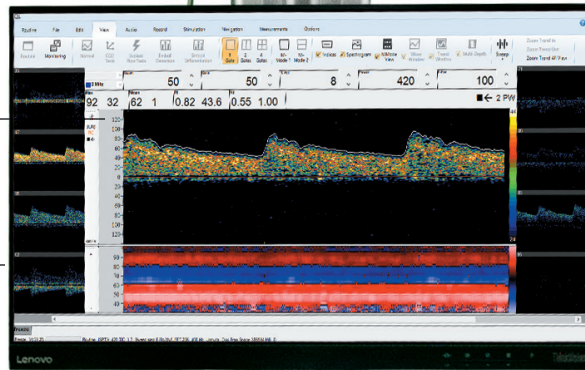
Optional integrated CO<sub>2</sub> module

Probe connectors for 1/2/4/8/16 MHz

Highest quality audio loudspeakers



Optional built-in-ion battery (4-6 hours) and powervar system



Optional Printer

Foot pedal to easily adjust height infinitely

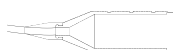
# Multi-Dop® T digital

Dimension L x W x H	19.6 x 16 x 5.7 inch
Weight	22 lbs
Doppler frequencies (MHz)	PW: 1 / 2 / 16; PW & CW: 4 / 8
Doppler channels	2
Spectra windows	1-9
Doppler-M-Mode	●
Gates	max. 8000
Audio playback	●
Continuous spectra recording	●
Report generator	●
Display built-in	17.3" Touchscreen
Resolution	1920 x 1080 Full HD
USB remote control	●
Hard disk	> = 1 TB SATA
Storage medium	128 GB SSD
USB ports	4 x 2.0 4 x 3.0
Ethernet	2x 10 / 100 / 1000 MBit
Graphic card interface	DVI, DP
DICOM interface	optional
Analog inputs / outputs	8 / 4
Digital interface <sup>5</sup>	Philips IntelliBridge, ICM+
Internal CO <sub>2</sub> module	optional
Operating system	Windows® 10 IoT Enterprise
Offline reader software	●
Remote support	●
Drive backup software	●
DWL® database	●
Archiving external	USB / CD / DVD / NET
Data export	UTF-8 ASCII
DICOM, HL7	optional
Doppler raw data export	●
Touchscreen	PCAP Multi-Touch
Wireless	WLAN (b,g,n,a,c) / Bluetooth 4.1
External Color Doppler Imaging module	optional

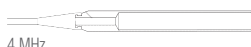
## Mobile GCX cart option<sup>4</sup>

Dimension L x W x H	24" x 20" x 34 - 60" / Height adjustable
Weight	85 - 124 lbs / varies by configuration
Monitor	optional / 24"
Resolution	optional / 1920 x 1080 Full HD
Power supply	optional / Ametek Powervar
Printer	optional / HP Inkjet
Battery	optional / lithium-ion

### Handheld probes



Available in 1/2 MHz



4 MHz



8 MHz

### Microprobes



16 MHz

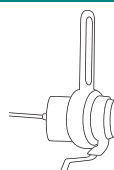


Probe navigator<sup>4</sup>

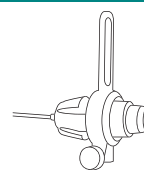
### Probe Fixations



Fixations several models



Available with 1/2/4 MHz monitoring probes



1/2 MHz handheld probes

### Software Modules

- \* Routine
- \* + Upgrade Emboli Detection
- \* + Monitoring
- \* + Upgrade CO<sub>2</sub> / Vasomotor
- \* + NMA®
- \* + Upgrade Evoke-Flow

+ = optional

### Basic configuration

Digital DWL® TCD device with DWL® routine software, removable wireless keyboard, remote control with mouse function.

### Additional accessories

Mobile cart option<sup>4</sup>, built-in-cart battery option<sup>4</sup>, external monitor<sup>4</sup>, keyboard<sup>4</sup>, mouse, headphone<sup>4</sup>, printer<sup>4</sup>, configurable foot switch, analog in- and output cable, power supply<sup>4</sup>.

### Classification

Transcranial Doppler Device: MDD Class II a

### Device cart

Recommended accessory by DWL USA, Inc.



Authorized DWL® Distributor

DWL USA, Inc.  
4062 Flying C Rd  
Suite 37  
Cameron Park  
CA 95682  
USA

Phone 760-753-7319  
sales@dwl.us  
www.dwl.us



## Multi-Dop® T digital

  
made in Germany

CE 0123



FDA K051 085

**Manufacturer:** Compumedics Germany GmbH,  
Josef-Schuetzler-Strasse 2, 78224 Singen / Germany, [www.dwl.de](http://www.dwl.de)  
Compumedics Germany GmbH is certified in accordance with EN ISO 13485.  
Multi-Dop, EZ-Dop, Doppler-Box, DiaMon, NMA, DWL and the DWL logo are  
trademarks of Compumedics Germany GmbH, Compumedics

and the Compumedics logo are trademarks of Compumedics Limited  
Australia. Windows is a trademark of Microsoft Corporation.  
GTIN: Multi-Dop T digital 04260493310062, Multi-Dop T digital with  
CO<sub>2</sub> module 04260493310079. Subject to change without notice.

<sup>4</sup> Merchandise, <sup>5</sup> Only with monitoring software